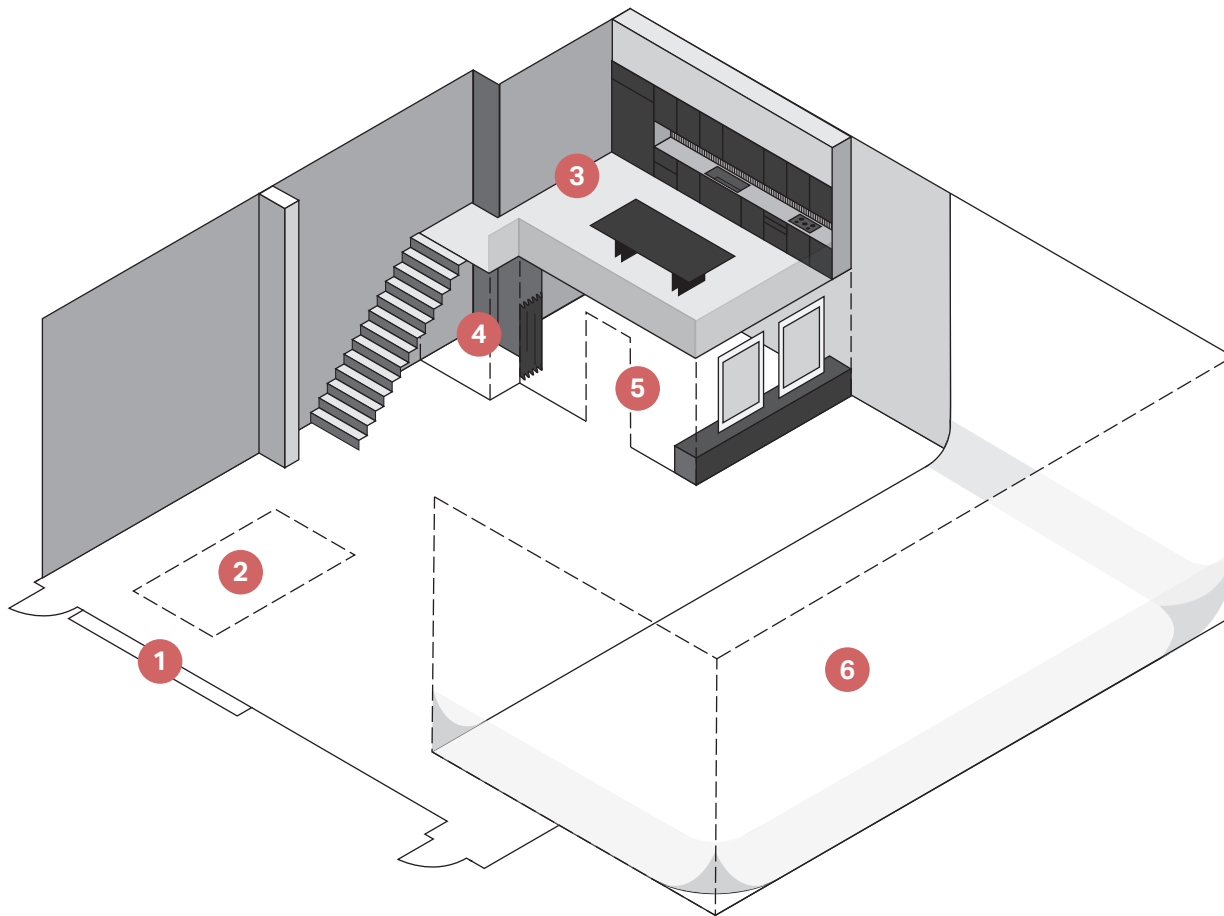


STUDIO ONE

Studio One is located on the ground floor with 312sqm of total floor space and a 4.3m high roller door entrance. Studio One features 58kw of Heating & Cooling capacity, total lockable keycode access, 63amp of 3 Phase power supply with distribution, private Hair & Makeup and Styling room, a floor heated cyclorama and a private client dining and kitchen area located on a mezzanine level.



- 1** 4.3m High and 4.2m Wide Roller Door Entrance
- 2** Drive-in Access Car Park
- 3** Private Client Dining and Kitchen Area
- 4** Enclosed Talent Change Room
- 5** Private Hair & Make Up and Styling Room with Dual Illuminated Make Up Mirrors
- 6** 8.0m Deep, 14.0m Wide and 6.0m High 270° Cyclorama